

ArcCapture™

Weld Camera Systems

**Training
Solutions**


QUICK SPECS

Applications

Schools and training centers
Manufacturing
Automation

Processes

MIG (GMAW)
Flux-cored (FCAW)
Stick (SMAW)
TIG (GTAW)

Resolution

1920 x 1080
(Full HD color)

Focus Type

Fixed

Operating Temperature

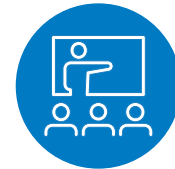
14–140° F
(-10–60° C)

Net Weight

Varies by model (see page 3)

Define. Display. Connect.

Deliver next-level training with our high-definition ArcCapture weld camera systems designed for modern welding programs — project live demos, observe welds remotely, and give welders a front-row seat to every weld.



**Optimize
Instructor
Efficiency**



**Real-Time
Weld
Visibility**



**Reduces
Rework**



**Portable and
Easy-to-Install**

Comes complete with:

- ArcCapture weld camera
- Converter
- 12 mm lens
- 16.4 ft. (5 m) SDI cable
- Power supply cords
- Lens cover
- 3.2 ft. (1 m) USB cable



System is warranted for one year, parts and labor.



Miller Electric Mfg. LLC
An ITW Welding Company
1635 West Spencer Street
P.O. Box 1079
Appleton, WI 54912-1079 USA

Equipment Sales US and Canada
Phone: 866-931-9730
International Phone: 920-735-4554

MillerWelds.com



ArcCapture™ Weld Camera Systems Features

Multi-device streaming to view and manage live weld footage from a variety of devices — including smartphones, tablets, and computers — for flexible access in any environment.

High-definition capture (1920 x 1080 resolution) for clear recording of the welding arc for real-time observation.

Wi-Fi connectivity to easily connect to phone or tablet via Wi-Fi or to large screens for group viewing or training.

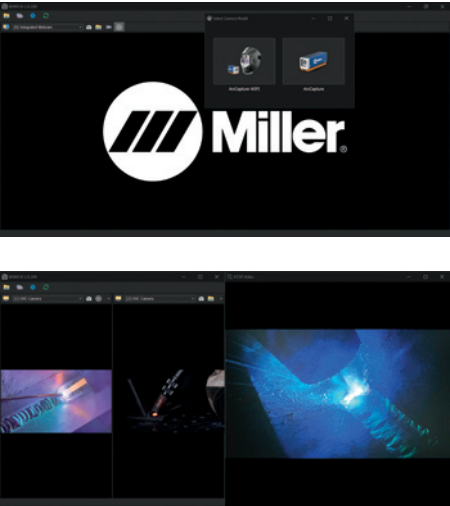
Flexible field of view with interchangeable 8 mm, 12 mm, or 16 mm lenses to best suit your training environment.

Portable and easy-to-install with a lightweight, compact design and quick, simple setup.

No extra lighting required as arc light is the only light source to deliver sharp, high-definition video.

Reduces rework and material waste through better visibility and timely feedback.

ArcCapture™ Weld Camera Systems Software



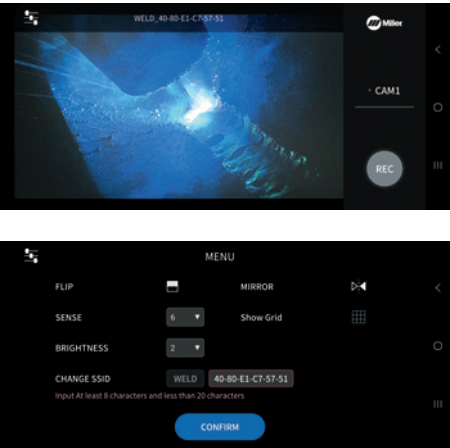
Desktop App — WVMS

- Use either ArcCapture weld camera with the desktop app — individually or simultaneously
- Connect either ArcCapture weld camera via cable for real-time viewing, recording, and saving footage to your device OR connect via Wi-Fi for real-time viewing.
- Make modifications in app to camera settings
 - Sensitivity
 - Add or remove grid lines
 - Brightness
 - Flip and mirror footage
- Simultaneously connect up to three weld cameras via cable(s) and Wi-Fi

MULTI-DEVICE CONNECTION CHART

	ArcCapture weld camera	ArcCapture weld camera with Wi-Fi	Two ArcCapture weld cameras with Wi-Fi
ArcCapture weld camera	Cable Cable	Cable Wi-Fi*	Cable Cable Wi-Fi*
Two ArcCapture weld cameras		Cable Cable Wi-Fi*	
ArcCapture weld camera with Wi-Fi	Cable Cable	Cable Wi-Fi*	Cable Cable Wi-Fi*

**Weld camera cannot record or save footage when connected via Wi-Fi to a desktop. This function is only available when the camera is connected to a desktop via cable.*



Mobile App — Miller® ArcCapture Camera App (For use with ArcCapture weld camera with Wi-Fi only.)

- Wirelessly connect the ArcCapture weld camera with Wi-Fi to a phone, tablet, computer, or mobile device
- Record and save footage to mobile device
- Make modifications in app to camera settings
 - Sensitivity
 - Add or remove grid lines
 - Brightness
 - Flip and mirror footage

Specifications (Subject to change without notice.)

RESOLUTION		FOCUS TYPE		SHUTTER TYPE	DIMENSIONS (CAMERA ONLY)		NET WEIGHT (CAMERA ONLY)		
1920 x 1080 (Full HD color)		Fixed		Electronic rolling	ArcCapture™ H: 1.57 in. (40 mm) W: 1.18 in. (30 mm) D: 4.09 in. (104 mm)	ArcCapture™ with Wi-Fi H: 2.28 in. (58 mm) W: 2.01 in. (51 mm) D: 3.27 in. (83 mm)	ArcCapture™ 0.34 lb. (0.15 kg)	ArcCapture™ with Wi-Fi 0.6 lb. (0.27 kg)	
LENS MOUNT	FILTER	DYNAMIC RANGE	VIDEO OUTPUT	EXTERNAL TERMINAL		WIRELESS	OPERATING TEMPERATURE	POWER CONSUMPTION	POWER SUPPLY
M12	UV + IR cut	140 + dB	HD-SDI	50 SMA connector/power control: 4-pin round screw connector		Wi-Fi 802/11 ax (ArcCapture with Wi-Fi only)	14–140° F (-10–60° C)	Max. 3 W	9 V 1A adapter

Genuine Miller® Accessories and Replacement Components



ArcCapture™ Mounting Arm 299643
Enables camera to clamp onto a table, torch, etc. with 360-degree ball joints for flexibility and adaptability for various views and uses.



Converter 299629



Lens Cover O-Rings (5-pack)
299784 For ArcCapture weld camera
299633 For ArcCapture weld camera with Wi-Fi



Travel Case 299634
Enables secure transport of both cameras with necessary accessories.



Converter Power Supply Cord 299630



Lens Cover Mountings
299793 For ArcCapture camera
299794 For ArcCapture weld camera with Wi-Fi



Camera Extension Cord 299792
33 ft. (10 m). 110-volt cord extends camera power supply cord.



Camera Power Supply Cord 299635



SDI Cable 299636
16.4 ft. (5 m) cable connects camera to converter box.



Coaxial Extension Cables

299640 9.8 ft. (3 m)
299641 16.4 ft. (5 m)
299642 22.9 ft. (7 m)
Optional cables to extend SDI cable connection to converter box.



Lenses
299638 8 mm
299637 12 mm (equipped on cameras)
299639 16 mm



USB Cable 299631
3.2 ft. (1 m) cable connects computer to converter box.



Lens Covers (5-pack)
299783 For ArcCapture camera
299632 For ArcCapture weld camera with Wi-Fi



UART Cable 299795
12.5 ft. (3.8 m) cable connects computer to ArcCapture weld camera. NOT for use with ArcCapture weld camera with Wi-Fi.

Ordering Information

EQUIPMENT	STOCK NO.	DESCRIPTION	QTY.	PRICE
ArcCapture™ Weld Camera System	907916	See front page for system components		
ArcCapture™ Weld Camera with Wi-Fi System	907917	See front page for system components		
Accessories				
ArcCapture™ Mounting Arm	299643			
Travel Case	299634			
Camera Extension Cord	299792	33 ft. (10 m) 110-volt cord		
Coaxial Extension Cables	299640	9.8 ft. (3 m)		
	299641	16.4 ft (5 m)		
	299642	22.9 ft (7 m)		
Replacement Components				
Converter Package	299628	Includes converter and converter power supply cord		
Converter	299629			
Converter Power Supply Cord	299630			
Camera Power Supply Cord	299635			
Lenses	299638	8 mm		
	299637	12 mm (equipped on cameras)		
	299639	16 mm		
Lens Covers (5-pack)	299783	For ArcCapture weld camera		
	299632	For ArcCapture weld camera with Wi-Fi		
Lens Cover O-Rings (5-pack)	299784	For ArcCapture weld camera		
	299633	For ArcCapture weld camera with Wi-Fi		
Lens Cover Mountings	299793	For ArcCapture weld camera		
	299794	For ArcCapture weld camera with Wi-Fi		
SDI Cable	299636	16.4 ft. (5 m) cable connects camera to converter box		
USB Cable	299631	3.2 ft. (1 m) cable connects computer to converter box		
UART Cable	299795	12.5 ft. (3.8 m) cable connects computer to ArcCapture weld camera. NOT for use with ArcCapture weld camera with Wi-Fi		

DATE :

TOTAL QUOTED PRICE :

Distributed by:

