

Classic Series

Auto-Darkening Welding Helmets

Welding Safety
and Health



QUICK SPECS

Viewing Area

FS#10 Flip-Up: 5.07 sq. in. (32.71 sq. cm)
VS: 6 sq. in. (38.71 sq. cm)
VSi: 5.9 sq. in. (37.94 sq. cm)

Operating Modes and Shades

FS#10 Flip-Up: Weld (10), Grind Shield
VS: Weld (8-13), Cut (5-8), Grind (3)
VSi: Weld (8-13), Grind Shield, X-Mode™ (8-13)
(FS#10 Flip-Up and VSi have integrated grind shields)

Light State 3.0

Sensors

FS#10 Flip-Up: 2
VS: 2
VSi: 3

TIG Rating

FS#10 Flip-Up: 20 amps
VS: 5 amps and below
VSi: 5 amps and below

Switching Speed

FS#10 Flip-Up: 1/3,600 second
VS: 1/23,000 second
VSi: 1/20,000 second

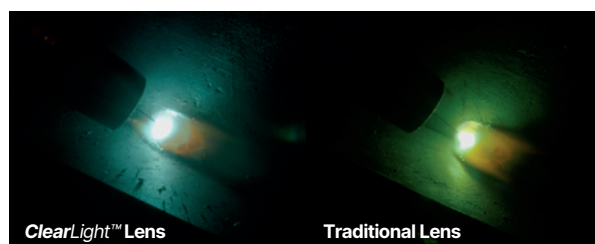
Weight

FS#10 Flip-Up: 14 oz. (396 g)
VS: 16 oz. (454 g)
VSi: 23 oz. (652 g)

Certifications ANSI Z87.1+, CSA, CE



Black (VS)
287803 shown.



ClearLight™ Lens Technology provides advanced high-definition optics for precise arc recognition.

Two independent arc sensors (three on VSi) provide dependable arc detection.

VSi™ features X-Mode which electromagnetically senses the weld to reduce sunlight interference and continuously detects the arc even if sensors are blocked.

VSi and FS#10 Flip-Up feature integrated grinding shields. Provides impact protection and a clear view for grinding.

Auto-on/off power control triggers lens at the strike of an arc.



Optional helmet lighting accessory kit includes two lights (one for each side) and all required mounting hardware.



Auto-darkening lens is warranted for three years.



Miller Electric Mfg. LLC
An ITW Welding Company
1635 West Spencer Street
P.O. Box 1079
Appleton, WI 54912-1079 USA

Equipment Sales US and Canada
Phone: 866-931-9730
International Phone: 920-735-4554

MillerWelds.com



Design Options



NEW!
Street Sparks™
(VS)
299618



Hex™
(VS)
291189



Metal Matrix™
(VS)
288519



Liberty™
(VS)
287820



Rise™
(VS)
287815



Metalworks™
(VS)
287810



Black
(VS)
287803



FS#10
Flip-Up
287798



VSi™
287794

Ordering Information

AUTO-DARKENING WELDING HELMETS	STOCK NO.	DESCRIPTION	QTY.	PRICE
Classic Series		See above		
Consumables				
Battery, CR2450	217043	For VS and VSi		
Cover Lens, Front	231411 / 231411B 235628	For VS. 5 pack or 50 pack (bulk) For VSi. 5 pack		
Cover Lens, Inside	770237 / 770237B 231410	For FS#10 Flip-Up. 5 pack or 50 pack (bulk) For VS and VSi. 5 pack		
Grinding Shield	261830 245818	For FS#10 Flip-Up For VSi		
Grinding Shield Tear-Away	254278	For VSi. 5 pack		
Replacement Parts/Accessories				
ClearLight™ Auto-Darkening Lens	287806 200541	For VS For VSi		
2x4 Auto-Darkening Lens for FS#10 Flip-Up	287830 770660 287828 287833	Shade 10 with ClearLight™ (standard) Shade 8 Shade 9 with ClearLight™ Shade 11 with ClearLight™		
Headgear	770246			
Helmet Bib	253882			
Hard Hat Adapter, Slotted	259637	Compatible with most slotted hard hats		
Hard Hat Adapter, Universal	222003	Compatible with MSA, Fibre Metal and most hard hats		
Helmet Hook	251018			
Helmet Lighting Accessory Kit	282013			
Magnifying Lens	212235 212236 212237 212238 212239 212240 212241 212242	0.75 1.00 1.25 1.50 1.75 2.00 2.25 2.50		

DATE :

TOTAL QUOTED PRICE:

Distributed by:

